



PAUL ROBINSON MORTGAGES

INDEPENDENT FINANCIAL ADVICE AVAILABLE

Mortgages | Life Assurance | Critical Illness | Accident, Sickness & Redundancy Cover |
Income Protection | Buildings & Contents Insurance | Trusts |

To arrange an initial appointment please contact:

ARMSTRONG GORDON

YOUR HOME MAY BE REPOSSESSED IF YOU DO NOT KEEP UP REPAYMENTS ON YOUR MORTGAGE.

Typically we do not charge a fee for mortgage advice. However depending upon your circumstances a fee of up to 1.5% of the mortgage amount may be charged. Approval Number H0114170



ARMSTRONG GORDON



Score	Energy rating	Current	Potential
92+	A		
81-91	B		
69-80	C		69 C
55-68	D	68 D	
39-54	E		
21-38	F		
1-20	G		

COLERAINE

3 Rugby Road

BT52 1JL

Offers Over £225,000



64 The Promenade Portstewart BT55 7AF
T. 028 7083 2000

F. 028 7083 2950 E. info@armstronggordon.com W. www.armstronggordon.com

Armstrong Gordon & Co. Ltd Estate Agents for themselves and for the vendors and for the lessors of this property whose agents they are given notice that: (1) the particulars are set out as a general outline only for the guidance of intending purchasers or lessees, and do not constitute, nor constitute part of an offer or contract; (2) all descriptions, dimensions, references to condition and necessary permissions for use and occupation and other details are given without responsibility and any intending purchaser or tenants should not rely on them as statements or representations of fact but must satisfy themselves by inspection or otherwise as to the correctness of each of them; (3) no person in the employment of Armstrong Gordon has any authority to give any representation or warranty whatever in relation to this property

028 7083 2000
www.armstronggordon.com

A very attractive hugely deceptive 4 bedroom semi detached house consisting of well laid out bedrooms and spacious living accommodation. This property boasts easy access to most local amenities including Coleraine town centre, primary and secondary schools. Another advantage is that this property has an outlook over Coleraine Rugby Playing Fields to the side and a rear garden that attracts afternoon to evening sun. So the selling agent strongly recommends early internal inspection to avoid disappointment.

On leaving Coleraine town centre along Lodge Road, take third exit off roundabout at the top of same onto Rugby Avenue. The Rugby Road development sits on the right hand side just after Coleraine Rugby Club. Number 3 is on the right hand side as you drive in.

ACCOMMODATION COMPRISES:

GROUND FLOOR:

Entrance Hall:

4'6 wide with tiled floor.

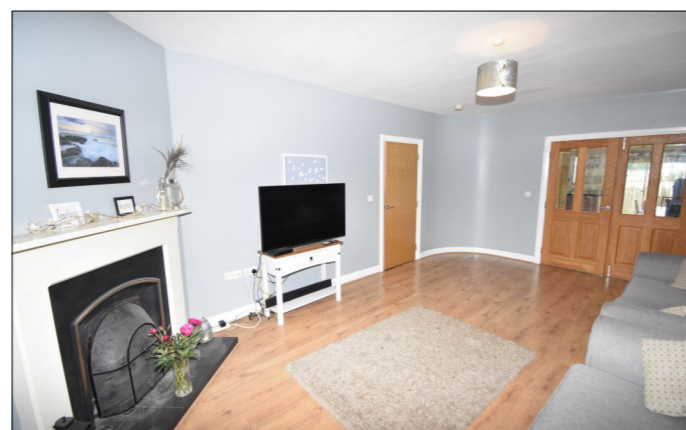
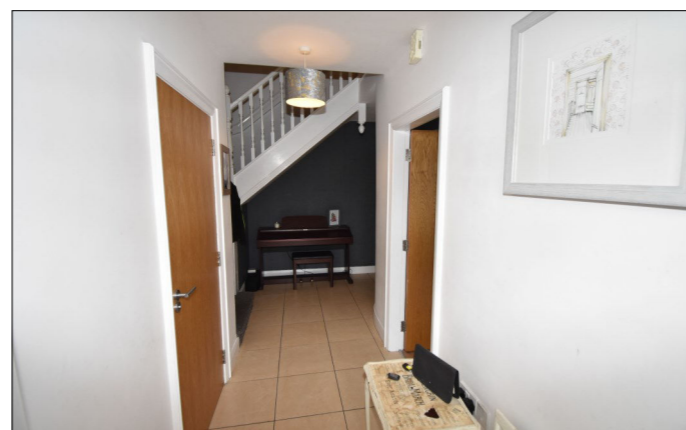
Separate W.C.:

With wash hand basin.

Lounge/Kitchen/Dining Area: 17'7 x 16'2

Lounge:

With cast iron fireplace with tiled hearth and laminate wood floor.



Kitchen/Dining Area:

With stainless steel sink unit, high and low level built in units with tiling between, integrated dish washer, integrated stainless steel oven and gas hob with stainless steel extractor fan above, drawer bank, wine rack, saucepan drawer, recessed lights and tiled floor.



Utility Room:

With stainless steel sink unit, high and low level built in units, plumbed for automatic washing machine and tumble dryer and tiled floor.

FIRST FLOOR:

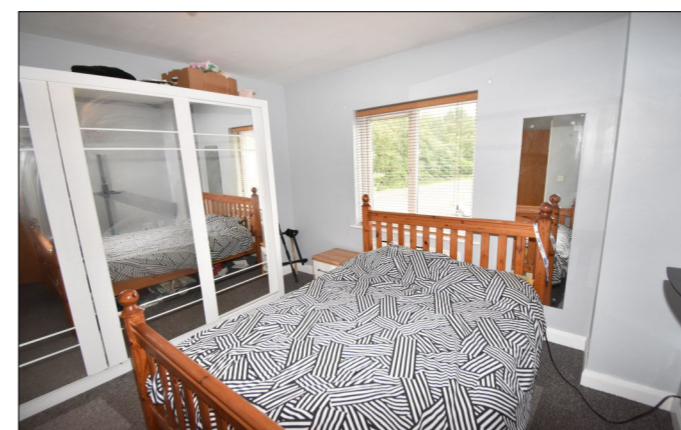
Landing:

With hot press and immersion heater.

Bedroom 1:

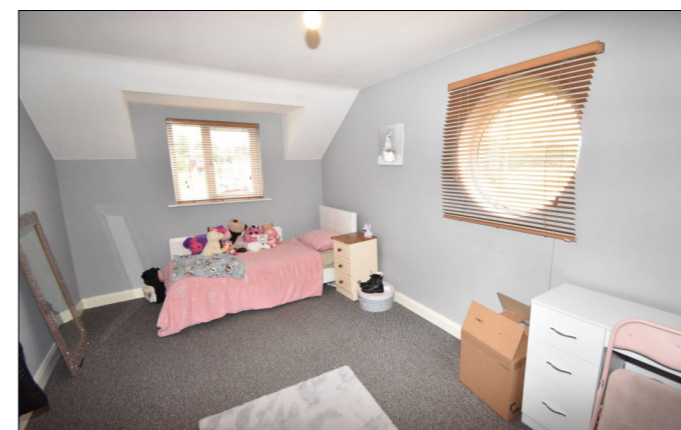
13'4 x 13'1

Ensuite off with w.c., wash hand basin, fully tiled walk in shower cubicle, extractor fan and tiled floor.



Bedroom 2:

20'4 x 10'2

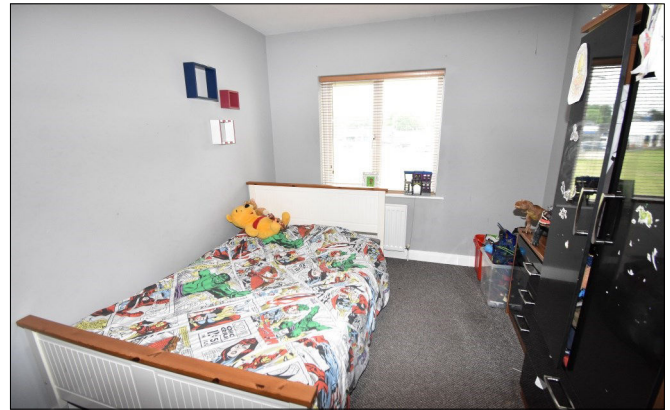


Bedroom 3:

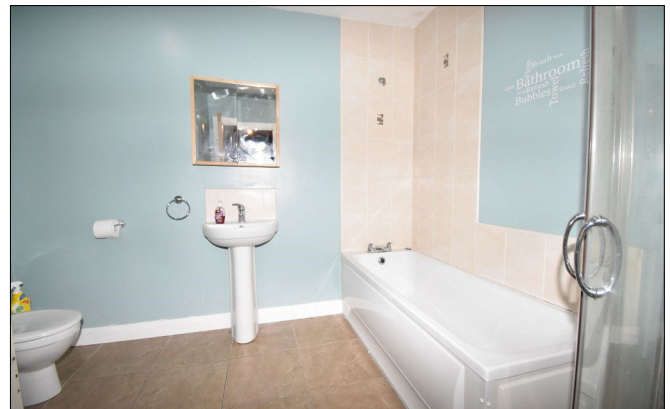
13'2 x 11'7

**Bedroom 4:**

13'3 x 9'7

**Bathroom:**

With white suite comprising w.c., wash hand basin, fully tiled walk in shower cubicle, extractor fan and tiled floor.

**EXTERIOR FEATURES:**

Outside to rear there is a fenced in lawn backing onto Coleraine Rugby and football pitch. There is also a paved patio area. Outside to front there is a garden laid in lawn and asphalt driveway extending to garage. 20'3 x 9'9 with PVC roller door.

**SPECIAL FEATURES:**

- ** Gas Fired Central Heating
- ** PVC Double Glazed Windows
- ** Integral Garage
- ** Views Over Coleraine Rugby Pitch
- ** Property Is Currently Tenanted To July 2024

TENURE:

Leasehold

MANAGEMENT COMPANY:

Please note that all purchasers will become Shareholders in a Management Company formed to provide buildings insurance and maintain communal areas. Current Service Charge is £380.00 per annum (04.06.2024)

CAPITAL VALUE:

£170,000 (Rates: £1666.68 p/a approx.)