



PAUL ROBINSON MORTGAGES

INDEPENDENT FINANCIAL ADVICE AVAILABLE

Mortgages | Life Assurance | Critical Illness | Accident, Sickness & Redundancy Cover |
Income Protection | Buildings & Contents Insurance | Trusts |

To arrange an initial appointment please contact:

ARMSTRONG GORDON

YOUR HOME MAY BE REPOSSESSED IF YOU DO NOT KEEP UP REPAYMENTS ON YOUR MORTGAGE.

Typically we do not charge a fee for mortgage advice. However depending upon your circumstances a fee of up to 1.5% of the mortgage amount may be charged. Approval Number H0114170



ARMSTRONG GORDON



64 The Promenade Portstewart BT55 7AF
T. 028 7083 2000

F. 028 7083 2950 E. info@armstronggordon.com W. www.armstronggordon.com

Armstrong Gordon & Co. Ltd Estate Agents for themselves and for the vendors and for the lessors of this property whose agents they are given notice that: (1) the particulars are set out as a general outline only for the guidance of intending purchasers or lessees, and do not constitute, nor constitute part of an offer or contract; (2) all descriptions, dimensions, references to condition and necessary permissions for use and occupation and other details are given without responsibility and any intending purchaser or tenants should not rely on them as statements or representations of fact but must satisfy themselves by inspection or otherwise as to the correctness of each of them; (3) no person in the employment of Armstrong Gordon has any authority to give any representation or warranty whatever in relation to this property

Score	Energy rating	Current	Potential
92+	A		
81-91	B		
69-80	C		
55-68	D		
39-54	E		47 E
21-38	F	35 F	
1-20	G		

PORTRUSH

2 Causeway View Terrace

BT56 8AT

Offers Over £389,000

028 7083 2000
www.armstronggordon.com

A superb opportunity to acquire a six bedroom mid-terrace house situated in one of the North Antrim Coast's most popular and picturesque tourist destinations. Offering an abundance of character throughout, this spacious family home incorporates all the benefits that a well located residence such as this has to offer. With superb views across Atlantic Ocean, North Antrim Coast, Skerries and Antrim Gardens, the property is a short distance from the harbour, Portrush Yacht Club, Ramore Wine Bar and Harbour Restaurant. The property is very centrally located, is convenient to most local amenities including West Strand Beach and is highly recommended for early internal inspection by the selling agent.

From Portrush Harbour, head through Ramore Street onto Ramore Avenue going past the former tennis courts. Turn right onto Lansdowne Crescent and follow the road right again onto Causeway View Terrace. No 2 will be the blue building on your right hand side opposite Antrim Gardens.

ACCOMMODATION COMPRISES:

Entrance Porch:

6'4 wide with cornicing, ceiling rose, tiled floor and glass panel door and sides leading to:

Entrance Hall:

6'4 wide with cornicing, ceiling rose, under stairs storage cupboard and solid wood floor.

Reception 1: 14'0 x 13'11

With wooden surround fireplace with tiled inset, cornicing, centre piece and solid wood floor.

Door leading to:

Store Room:

With storage cupboard. 10'11 x 5'3

Reception 2:

With solid wood floor, cornicing and PVC door leading to rear. 11'11 x 8'9

Reception 3:

With recess for T.V., recessed lighting and storage area. 20'2 x 11'4

FIRST FLOOR RETURN:

Landing:

With cornicing.

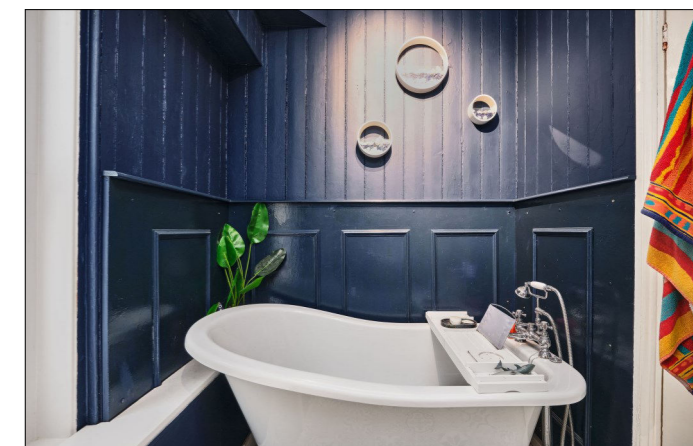


Bedroom 1:

With original fireplace and ceiling rose. 11'10 x 10'11 average

Bathroom:

With white suite comprising high level flush w.c., wash hand basin, fully tiled walk in shower cubicle with electric shower, free standing bath with telephone hand shower, black matt heated towel rail and part wood panel walls.



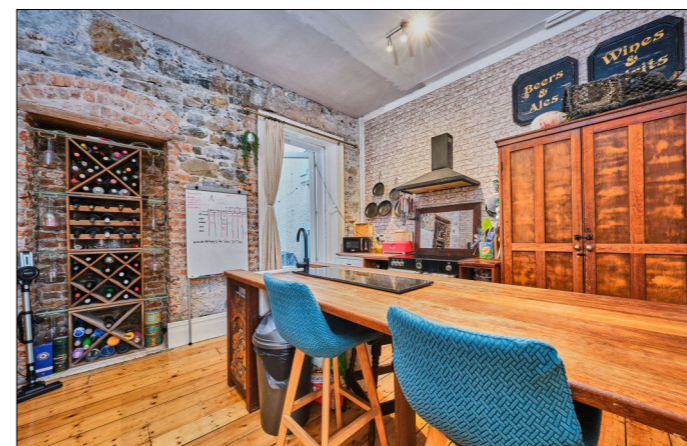
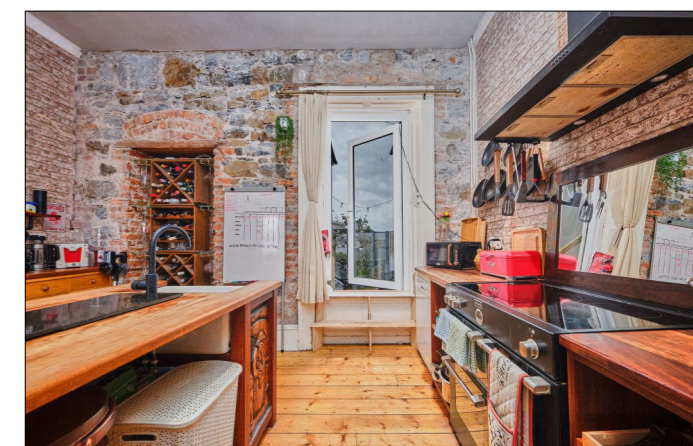
FIRST FLOOR:

Landing:

With cornicing.

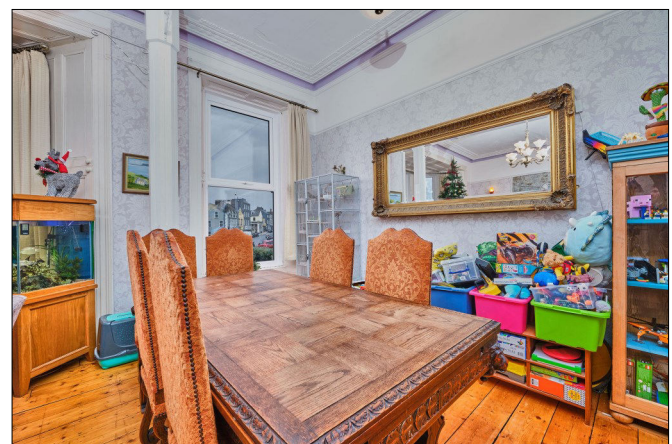
Kitchen/Dining Area:

With double ceramic sink set in wood worktops in island, fitted lower level shelving, space for large electric stove with hob, extractor fan above, space for fridge freezer, space for wine cooler, space for dishwasher, island with seating for four people, original stone wall, cornicing, solid wood floor and pedestrian PVC door leading to decked balcony area. 14'3 x 12'2



Lounge/Dining Area:

With wood surround fireplace with tiled inset and hearth, picture rail, wired for wall lights, storage surrounding bay window, cornicing, ceiling rose and solid wood floor. 21'0 x 18'5 into bay



SECOND FLOOR RETURN:

Bedroom 2:

13'5 x 11'9



Separate W.C.:

With wash hand basin, hot press, part panel walls and solid wood floor.

SECOND FLOOR

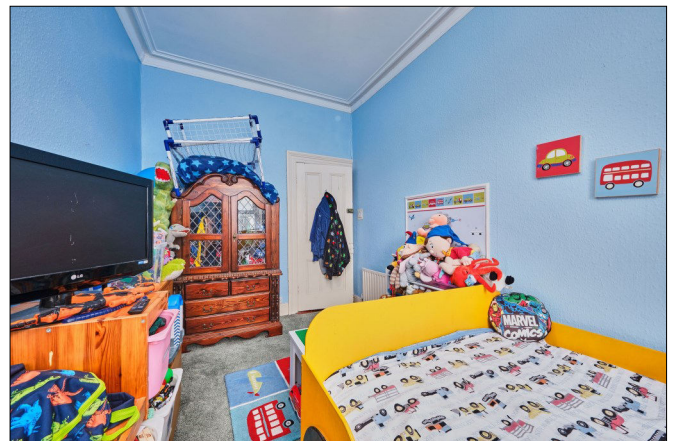
Bedroom 3:

With wood surround fireplace with cast iron and tiled inset, cornicing, storage and wood panelling surrounding bay window and views of Atlantic Ocean, Skerries and Antrim Gardens. 18'4 x 12'5 into bay



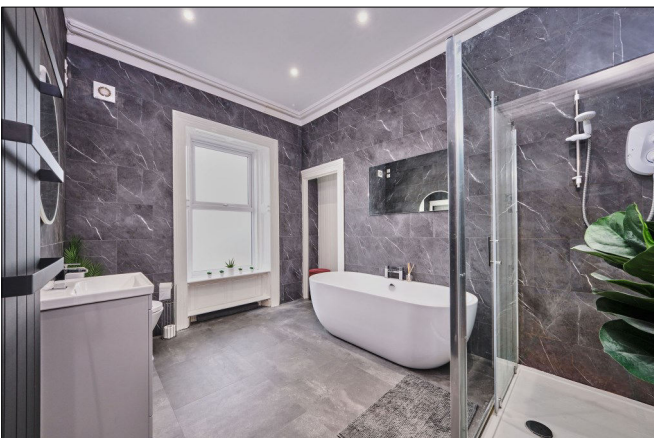
Bedroom 4:

With cornicing and views of Atlantic Ocean, Skerries and Antrim Gardens. 14'2 x 8'3



Bathroom:

With white suite comprising w.c., wash hand basin with storage below and illuminated mirror above, large fully tiled walk in shower cubicle with electric shower, freestanding bath, black matt heated towel rail, fully tiled walls, cornicing, extractor fan, recessed lighting and tiled floor.



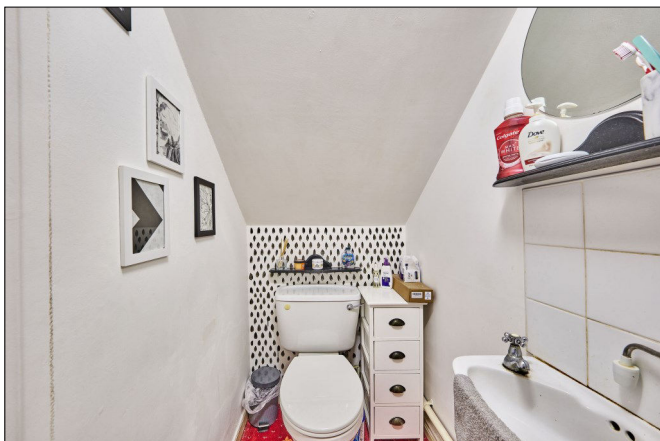
Utility Room:

With plumbing for automatic washing machine and space for tumble dryer. 8'8 x 5'1

THIRD FLOOR:

Landing:

With storage cupboard.



Separate W.C.:

With wash hand basin and tiled splashback.

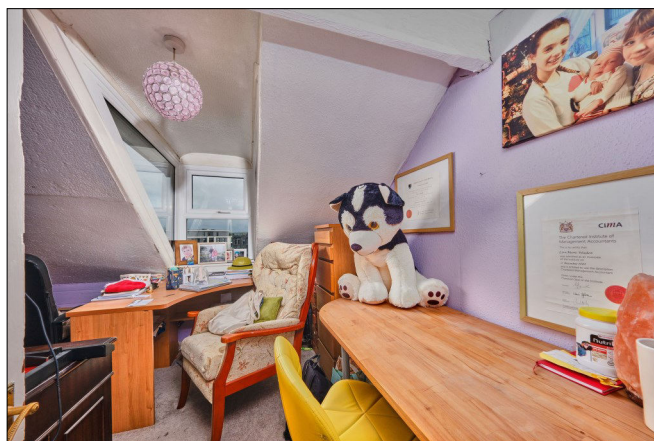
Bedroom 5:

With two dormer windows with sea views in both directions. 18'8 x 10'8



Office:

With dormer window with sea views across to The Skerries. 9'11 x 7'2



EXTERIOR FEATURES:

Small enclosed decked area with access to Causeway View Lane, bin area and boiler.

SPECIAL FEATURES:

- ** Oil Fired Central Heating
- ** PVC Double Glazed Windows
- ** Excellent Prime Town Centre Location
- ** Views Across Atlantic Ocean, Skerries & Antrim Gardens

TENURE:

Freehold

CAPITAL VALUE:

£160,000 (Rates: £1488.80 p/ approx.)

